

Anything but routine

Choosing a cardiac center



YALE-NEW HAVEN
HOSPITAL

When you're faced with heart disease,

you have some serious thinking to do. And your first thought should be where to be treated. Because the fact is not all cardiac centers have the same capabilities. Yale-New Haven Hospital (YNHH) is one of the select few cardiac centers in the country where skilled teams of specialists including cardiologists, interventional radiologists, electrophysiologists, cardiac and transplant surgeons and critical care nurses have performed thousands of cardiac procedures. We are also one of the select few cardiac centers where groundbreaking advancements are being developed by the same physicians who treat your condition.

Because of our skill and experience, Yale-New Haven Hospital is also one of the few cardiac centers nationwide where your outlook for a full recovery is four times the national average.

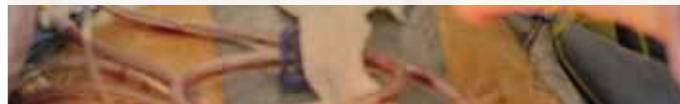
Procedures

Yale-New Haven Hospital offers the widest range of procedures and techniques in the state – many of which have pioneered the advancement of cardiac care. We offer specialized intensive care units and operating rooms, coronary care units, adult and pediatric catheterization labs, nuclear and echocardiology labs and a Chest Pain Center.

But it's not just the breadth of our services that distinguishes, it's the depth of our skills, having pioneered numerous breakthroughs in cardiac care.



Yale-New Haven Hospital offers the widest range of procedures and techniques in the state – many of which have pioneered the advancement of cardiac care.



Cardiovascular medicine specialty areas

General cardiology
Cardiac catheterization
Interventional cardiology
Electrophysiology
Echocardiography
Nuclear cardiology
Heart failure
Preventive cardiology
Adult cardiac catheterization laboratories
Pediatric cardiology

Cardiothoracic surgery specialty areas

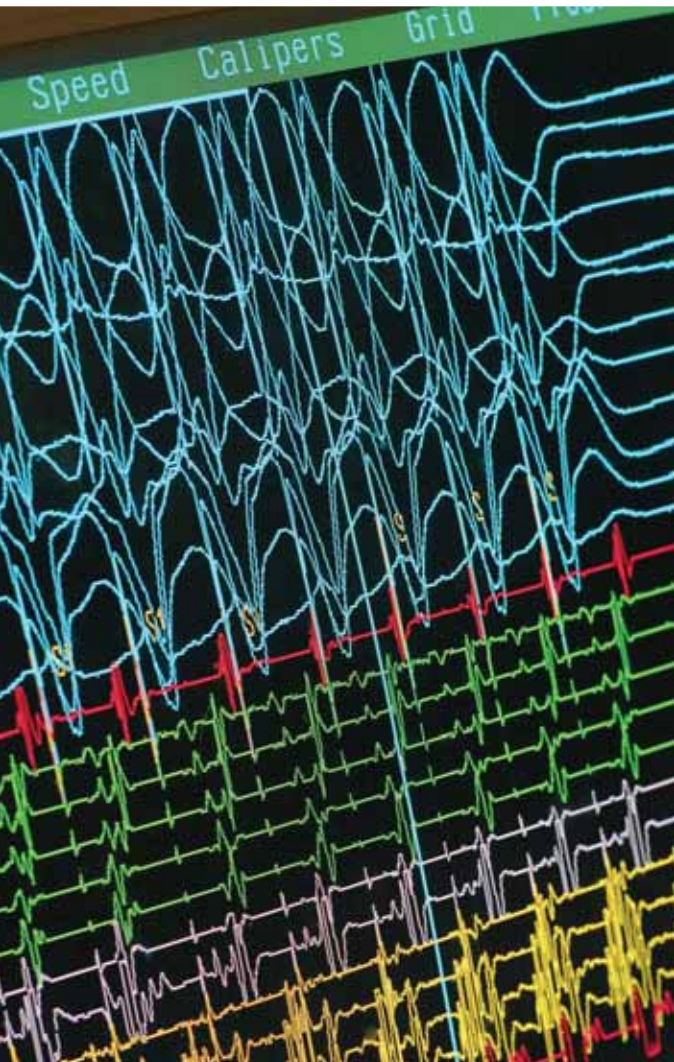
Congenital and acquired heart disease
Coronary artery bypass
Valve repair and replacement
Aneurysm repair
Heart failure
Pediatric cardiac surgery

Studies have shown that patients who have heart attacks are more likely to survive if they are taken directly to hospitals that treat a high volume of cardiac patients. YNHH treats more cardiac patients than any other facility in the state. Compare the minimum number of procedures recommended by national heart disease organizations to the number we perform:

- **200 cardiac angioplasties per year**
YNHH performs over 1,300
- **300 cardiac catheterizations each year**
YNHH does over 3,500
- **150 open-heart operations per year**
YNHH performs more than 1,000



Studies have shown that patients who have heart attacks are more likely to survive if they are taken directly to hospitals that treat a high volume of cardiac patients.



Yale-New Haven Hospital's comprehensive cardiac services provide leading edge care covering a full range of cardiac conditions.

Whether it's emergency care for a heart attack, surgery to bypass clogged arteries or education about lowering the risk for heart disease, Yale-New Haven Hospital's comprehensive cardiac services provide leading-edge care covering a full range of cardiac conditions:

- **Angina pectoris** – When blood flow and oxygen supply to the heart muscle is impeded, the result is chest discomfort or pain called angina.
- **Arrhythmias** – Arrhythmias are heartbeat irregularities caused by disturbances in the electrical system controlling the heart.
- **Cardiomyopathy or heart muscle disease** – Several kinds of heart muscle disease enlarge heart chambers, causing weakening of the heart.
- **Congenital heart disease** – Congenital heart disease in a fetus includes valve defects and holes in the walls of the heart.
- **Congestive heart failure (CHF)** – When the heart is unable to pump blood on demand, blood backs up and the pressure within the heart rises, impeding the heart's ability to pump.
- **Coronary artery disease** – If coronary arteries harden or narrow (due to buildup of fats and cholesterol), they have difficulty supplying heart muscle with oxygen-rich blood.
- **Heart Attack** – A heart attack, or acute myocardial infarction (MI), is most often caused by a blood clot forming in an artery where coronary artery disease is present.
- **High blood pressure** – If blood vessels become narrowed, the heart must pump harder than normal to circulate blood, resulting in high blood pressure or hypertension.
- **Valvular heart disease** – Valvular heart disease is when any of the heart's four valves narrow or fail to close properly.

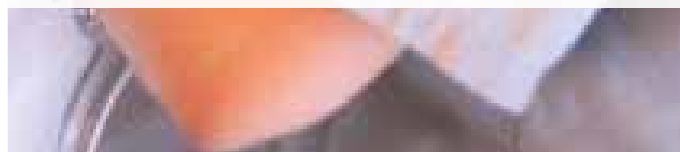
Why choose Yale-New Haven Hospital for cardiac care?

- Heart disease specialists at YNHH and Yale School of Medicine are leaders in developing new cardiac diagnostic tools and treatments.
- YNHH's Chest Pain Center is devoted to quick, accurate diagnosis of heart problems.
- YNHH's Center for Outcome Research and Evaluation is a national leader in evaluating quality measures and patient outcomes in the treatment of heart disease.
- Leading-edge clinical research makes the latest treatments, techniques and technology available to YNHH patients before they're available elsewhere.
- YNHH has an adult congenital heart program for survivors of childhood heart defects.
- YNHH's cardiac services are consistently listed among the best in the nation by *U.S. News & World Report*.
- YNHH is regularly recognized among the top 100 U.S. hospitals for cardiac care in national studies conducted by Solucient Leadership Institute.

FOR A PHYSICIAN REFERRAL, CALL (203) 688-2000
OR TOLL-FREE (888) 700-6543



Heart disease specialists at YNHH and Yale School of Medicine are leaders in developing new cardiac diagnostic tools and treatments.



The cardiologists and cardiothoracic surgeons at YNHCH are known for their success in performing the most delicate and technically demanding procedures.

Common Heart Diagnostic Tests or Procedures

Blood tests

Cardiac catheterization

Chest X-ray

Echocardiogram (echo)

Electrocardiogram (ECG or EKG)

24-hour EKG (Holter monitoring)

Exercise stress test

Nuclear scans

Pharmacologic stress test

Positron emission tomography (PET)

Transesophageal echocardiogram (TEE)

Ultrasound

Treatments

When it comes to cardiac treatment, not all hospitals have the same capabilities. It takes a leading cardiac center to provide the depth of skill in as wide a range of procedures as Yale-New Haven Hospital is equipped to offer.

Angioplasty or PTCA

Atherectomy

Cardiac valve surgery

Coronary Artery Bypass Surgery (CABG)

Heart transplantation

Left or right ventricular assist devices
(mechanical heart)

Stent or drug-eluting stent

Valvular heart disease treatments

Electrical Disturbance Treatments

Cardiac rehabilitation

Cardioversion

ICD (implantable cardioverter/ defibrillator)

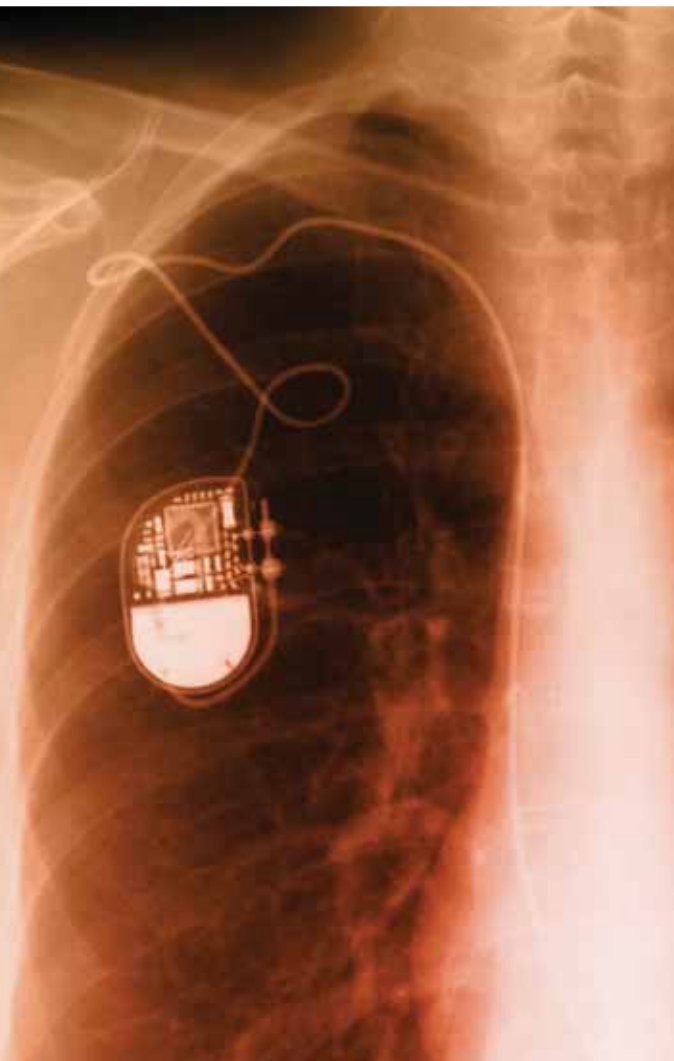
Medications

Pacemakers

Pediatric Cardiology and Cardiothoracic Surgery

Yale-New Haven Children's Hospital (YNHCH) has a long tradition of advancing medicine in pediatric cardiology while providing state-of-the-art care in a warm, compassionate setting. YNHCH is a major referral center for pediatric cardiac care, treating patients from throughout the nation. Pediatric cardiology services include:

- **Pediatric Cardiac Catheterization Laboratory** – recognized for its technological advances in both diagnosis and intervention
- **Pediatric Echocardiography Laboratory** – provides a wide range of non-invasive tests
- **Yale Fetal Cardiovascular Center** – the first center of its kind in the U.S. and a model for similar programs throughout the world
- **The Fetal Cardiovascular Laboratory** – diagnoses heart disease in the fetus and counsels expectant parents
- **Yale Cardiovascular Genetics Clinic** – cardiac and genetic evaluations and care for patients with genetically caused congenital heart disease
- **Pediatric Exercise Physiology Laboratory** – cardiac conditioning for postoperative patients
- **Tissue engineering** – a new field focused on growing cells to repair or replace structural tissues in the heart
- **Electrophysiology and pacing service** – cares for pediatric and adult congenital heart patients with arrhythmias
- **Pediatric cardiac surgery** – state-of-the-art surgical care that is among the best in the country, seven days a week, 24 hours a day
- **Kawasaki Disease Clinic** – manages this most common form of vasculitis, a major cause of heart disease in children
- **8 Outpatient Cardiology Clinics** – in New Haven, Norwich, Greenwich, New London, Norwalk, Waterbury and Guilford



YALE-NEW HAVEN
HOSPITAL

(888) 700-6543 • www.ynhh.org