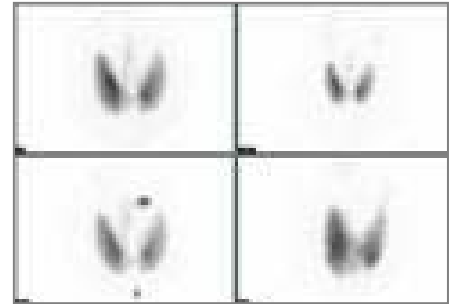


## Nuclear Medicine: Thyroid Uptake and Scan

### What is a thyroid uptake and scan?

A thyroid uptake and scan is a test used to evaluate your thyroid gland or prepare for radioiodine therapy. It is a 2-day test and involves swallowing a capsule, having an injection of a small amount of radioactive material, waiting for that material to move into the thyroid, and taking pictures.



### Do I need to prepare for this test?

Yes! You must **stop taking thyroid medicines** for a period of time before the test. Please speak to your doctor before you prepare for this test.

- If you take **Synthroid**, stop taking it 4 weeks before this scan
- If you take **Cytomet**, stop taking it 2 weeks before this scan
- If you take **PTU**, stop taking it 4 days before this scan.

You must have no other tests that inject x-ray contrast for **6 weeks before** this test.

### What is the test like?

#### On Day 1

- You will come to the Nuclear Medicine Department to fill out a questionnaire
- You will swallow an iodine capsule. After you take this capsule, you may leave the hospital.

#### On Day 2

- You will return to the Nuclear Medicine Department.
- We will rest a probe gently on your neck for a while.
- Then, the technologist will inject a radioactive material into your arm.
- You will lie on a table while pictures are taken of your neck area.

This scan usually takes about 1 hour. Side effects to this radioactive material are extremely rare. However tell the technologist if you are breastfeeding or if there is any chance of pregnancy.

### What happens after the thyroid uptake and scan?

After the exam you may return to your normal activities. A radiologist will review the pictures and send a report to your doctor.

If you have any questions about this test, please feel free to contact Nuclear Medicine at (203) 688-5610.