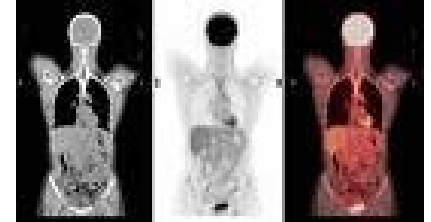


Nuclear Medicine: PET Scan

What is a PET scan?

A PET scan is a test that is used to detect cancer and follow cancer treatment. It can also be used to detect some seizure disorders and heart disease. For this scan, patients have a small amount of radioactive material injected through an IV and have images taken of their body. This scan takes about 2 hours.



Do I need to prepare for this test?

Yes!

- Do not exercise for **24 hours before** the scan.
- Do not eat anything for **6 hours before** the scan (including no candy and no gum). You may drink water only. **NOTE - if you eat within 6 hours of your appointment, your scan may need to be rescheduled.**
- If you are diabetic, contact your doctor to adjust your insulin dose to maintain a blood glucose level below 200 mg/dl for this scan.
- If you have a 'port' in place, you should go to the chemotherapy clinic before this test to have the port accessed. If you do this, you will not need to have an additional IV for the test.

What is the test like?

- After the IV is inserted and the radioactive material is injected, you will rest quietly in a private room for 60 minutes.
- You should not move, read, listen to music, or talk during this time.
- After 60 minutes, you will lie on a table with your arms above your head. If you cannot do this, please talk to the technologist about an alternative. This scan takes about 60 minutes.
- Side effects to this radioactive material are extremely rare. However, tell the technologist if you are breastfeeding or if there is any chance of pregnancy.

What happens after the PET scan?

After the scan you may return to your normal activities. A radiologist will review the pictures and send a report to your doctor.

If you have any questions about this test, please feel free to contact Nuclear Medicine at (203) 688-5610